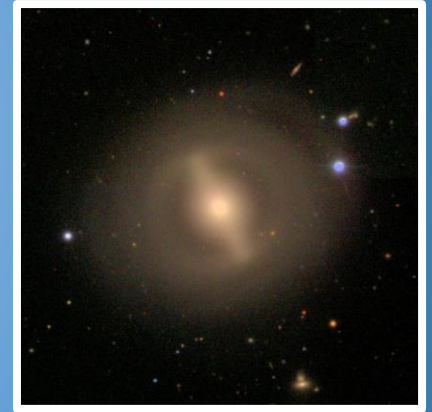
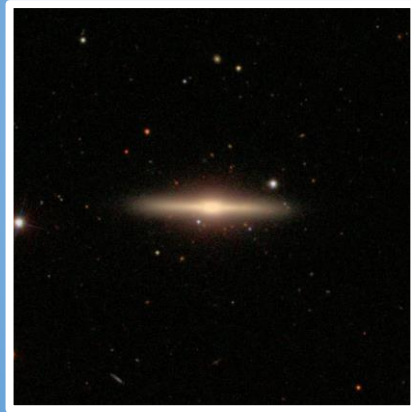
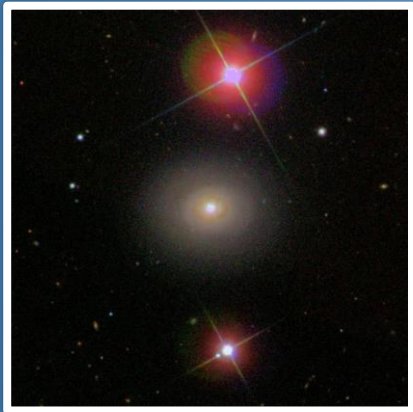


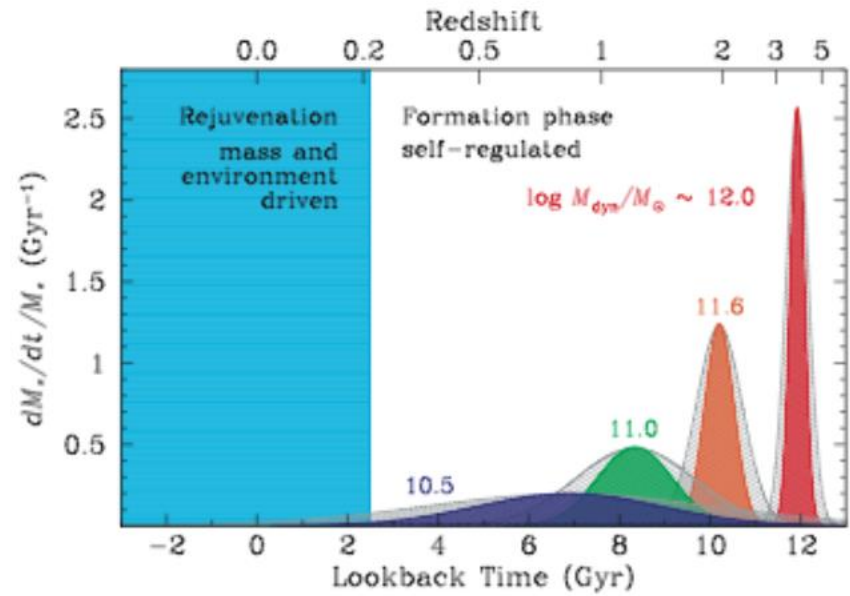
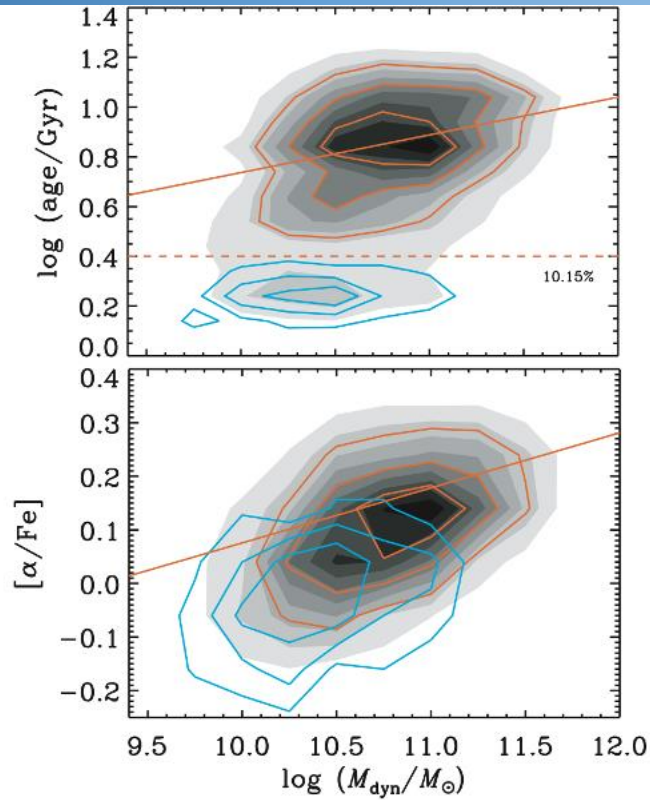
Early-Type Galaxy Stellar Populations in the Near Infrared



Christina Baldwin
Macquarie University



The SSP Picture

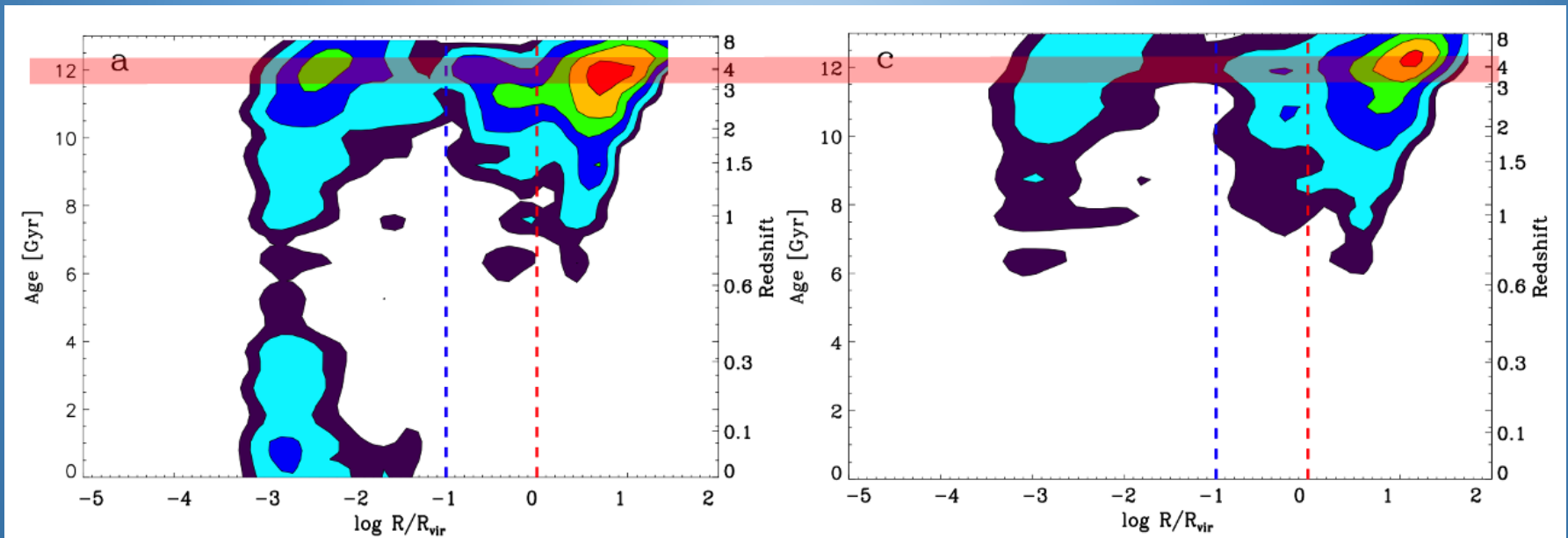


Thomas et al 2005, 2010

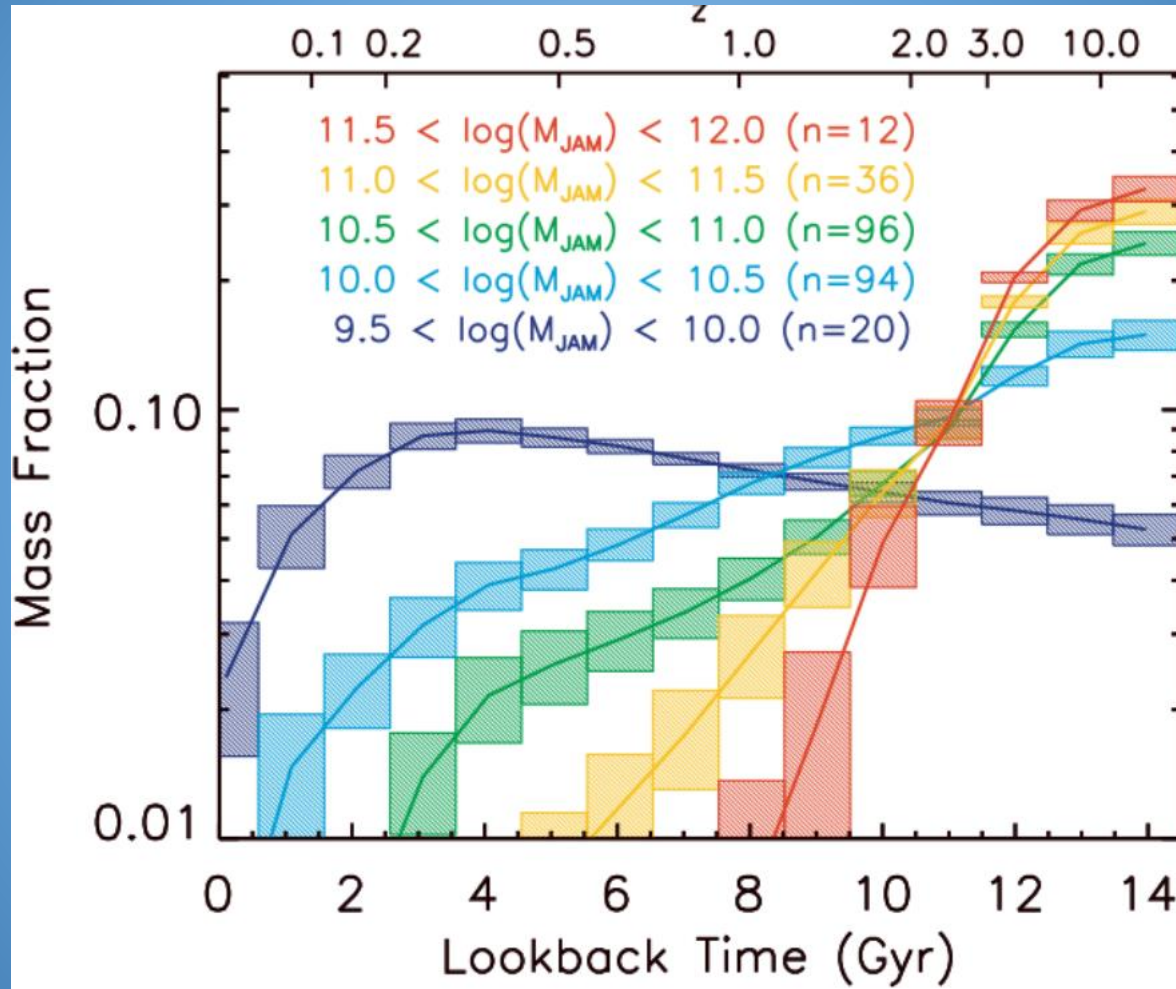
Simulations

Low mass

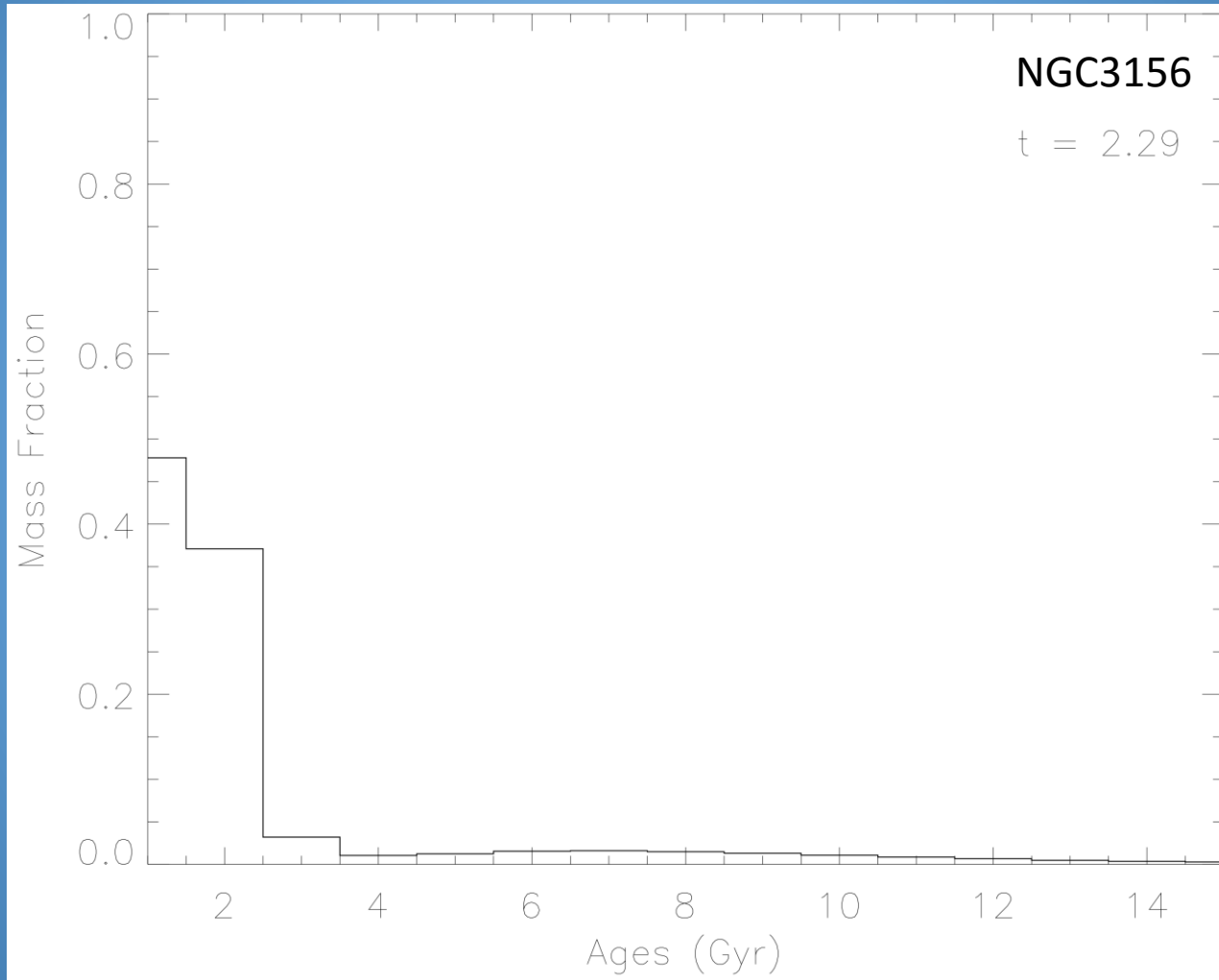
High mass



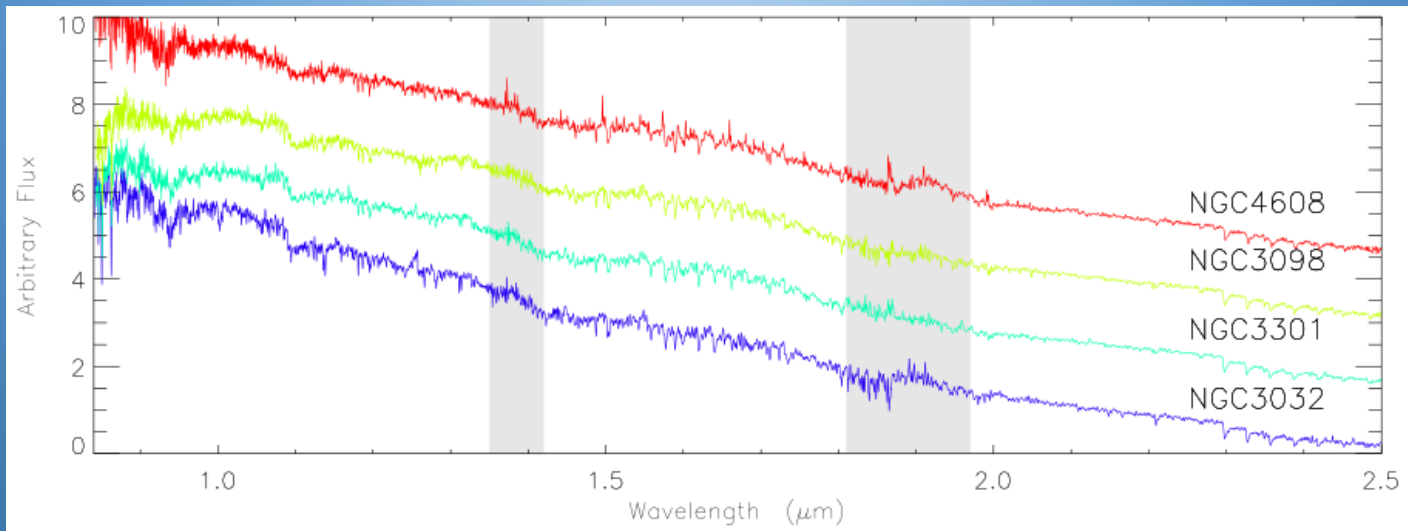
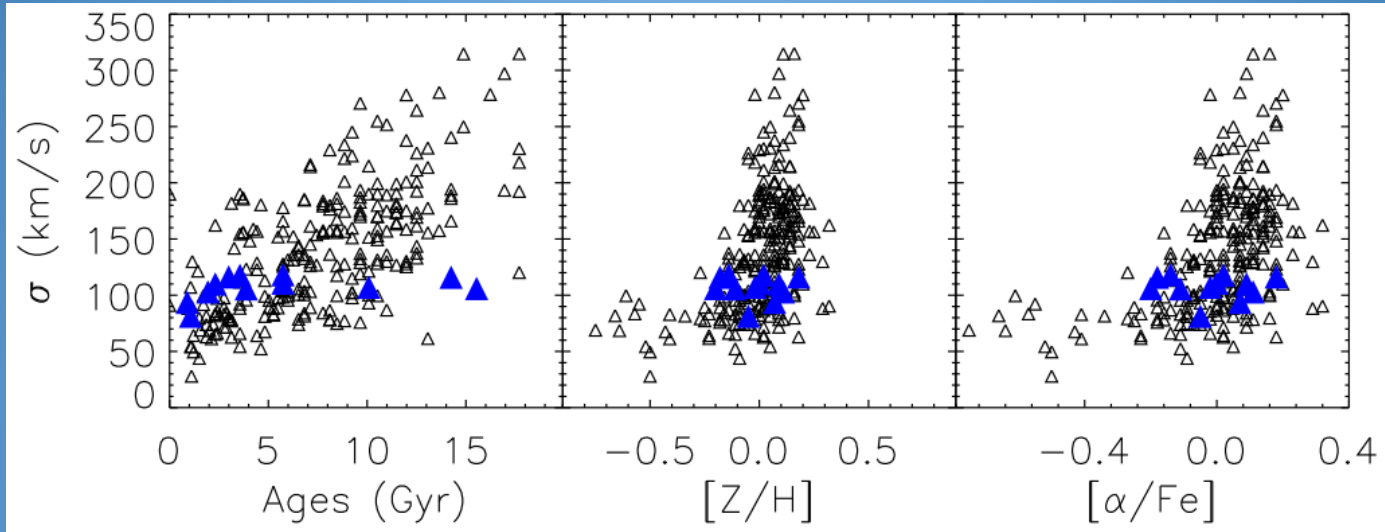
Star Formation Histories



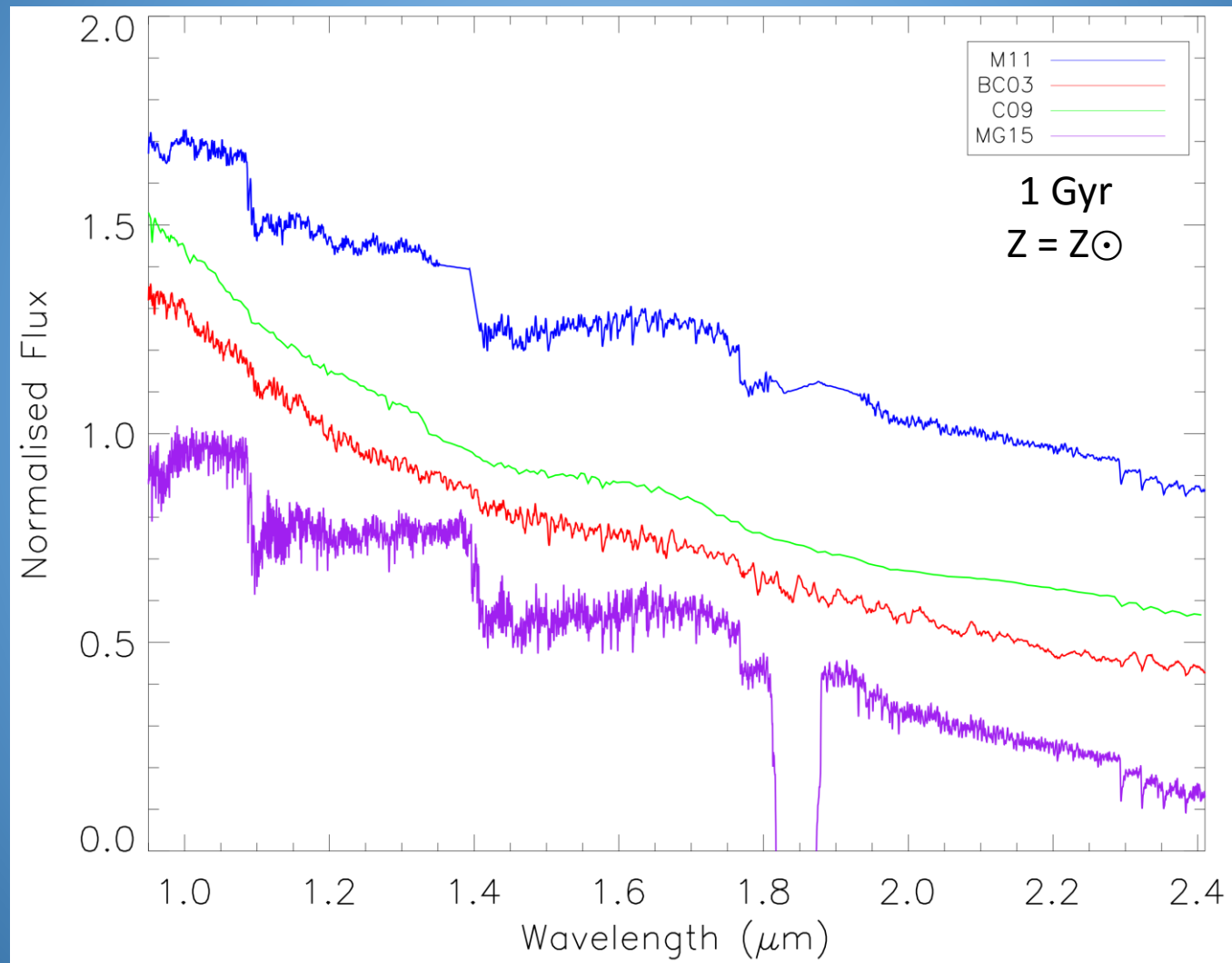
Star Formation Histories

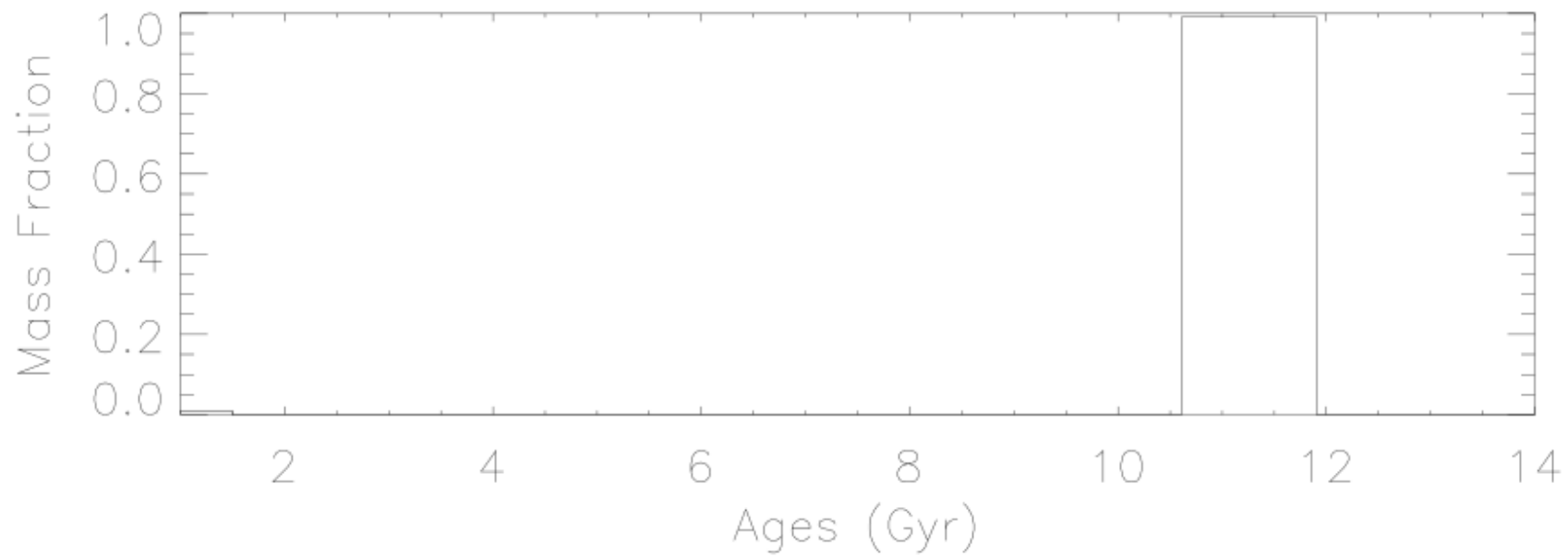
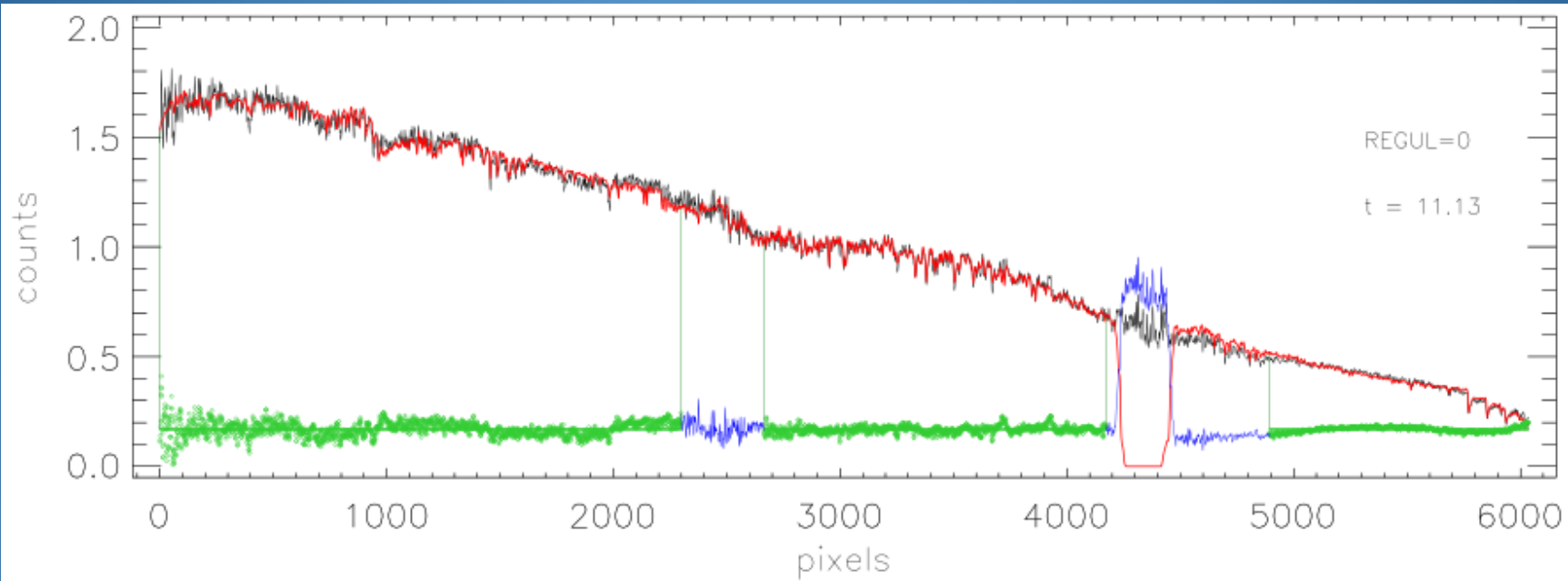


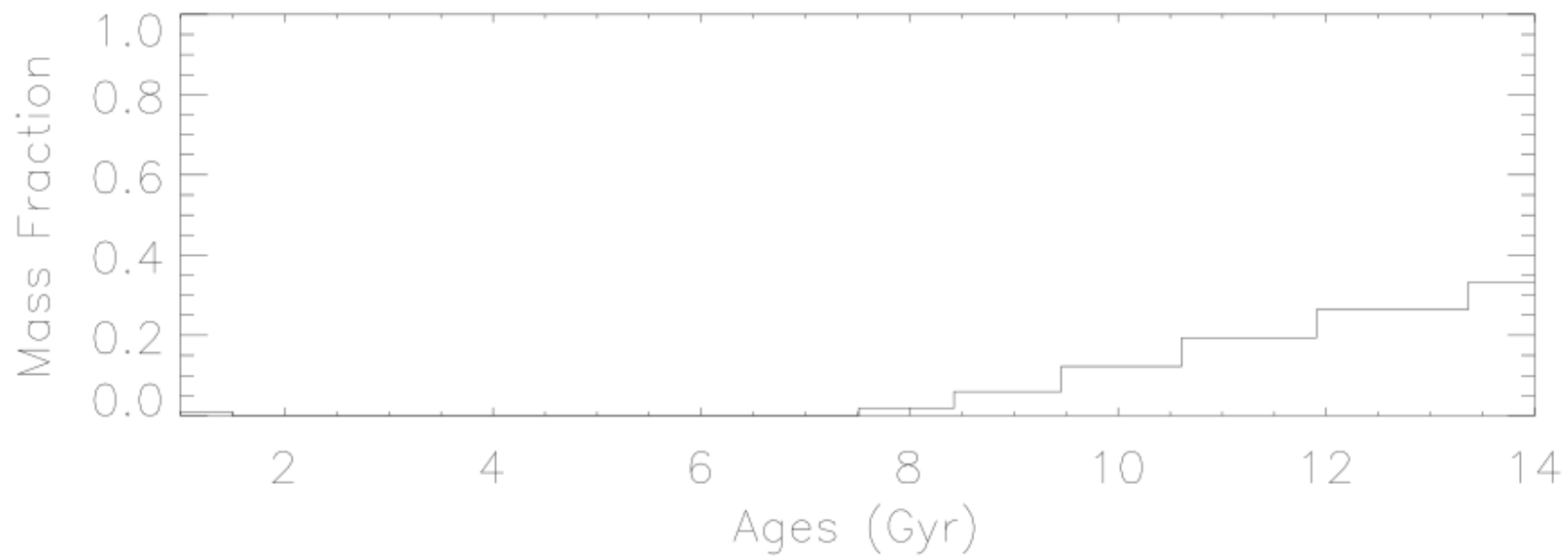
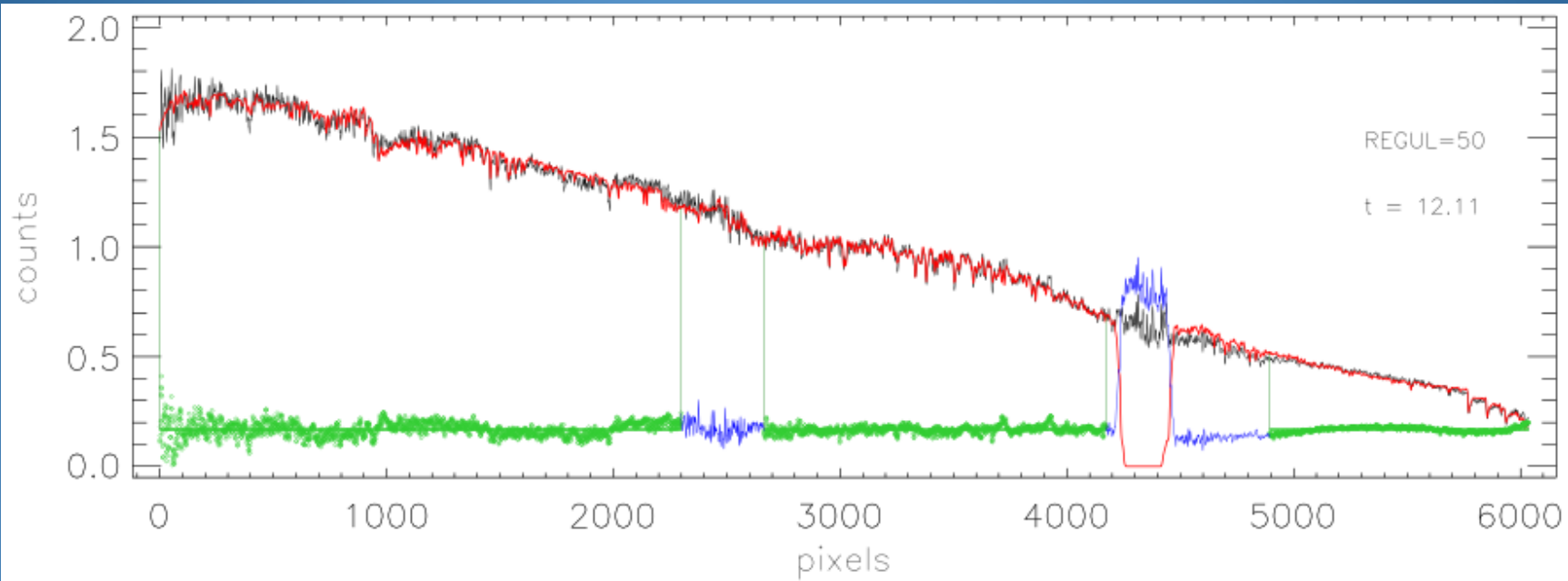
Sample & Data

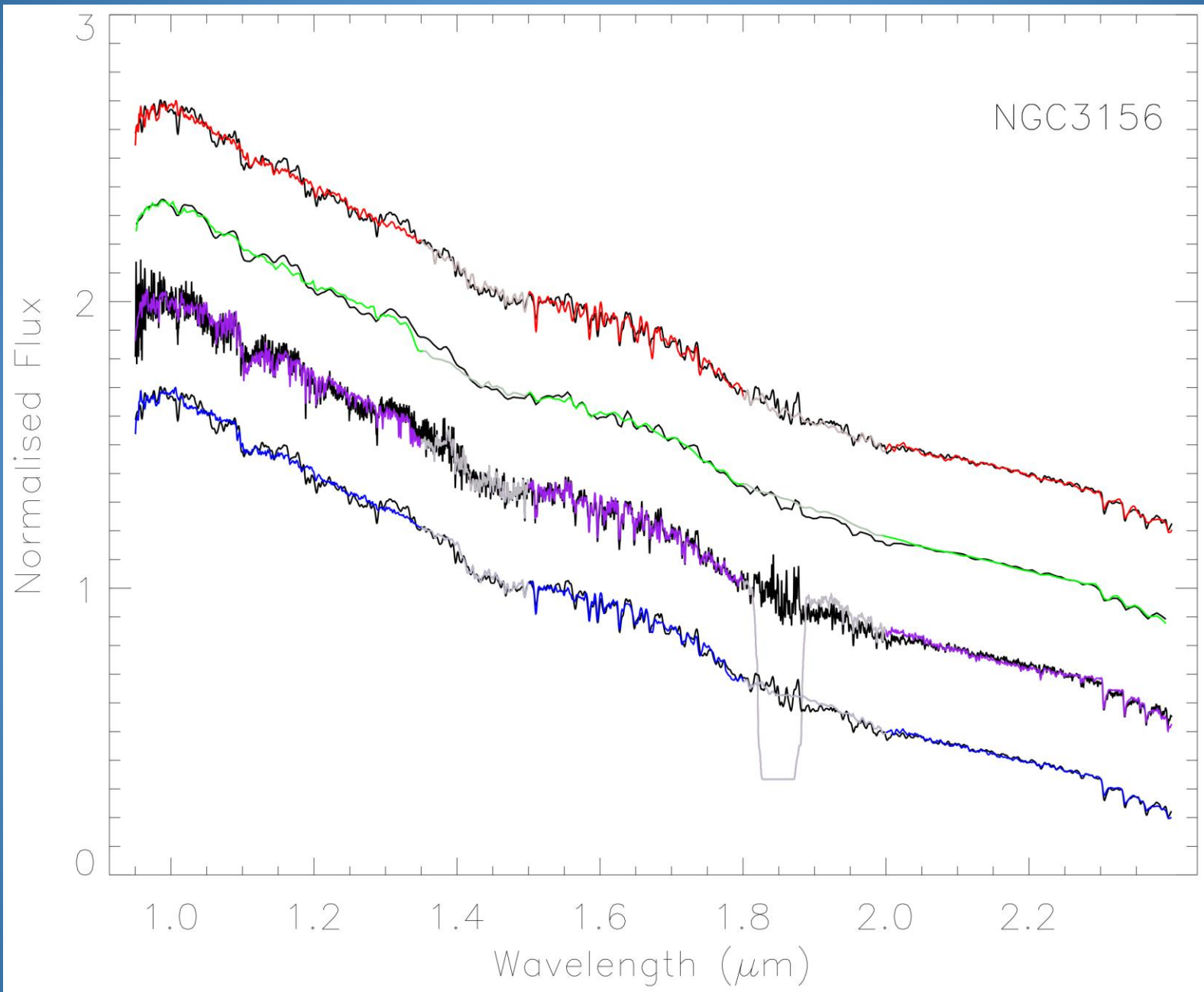


Problem: NIR Models Inconsistent



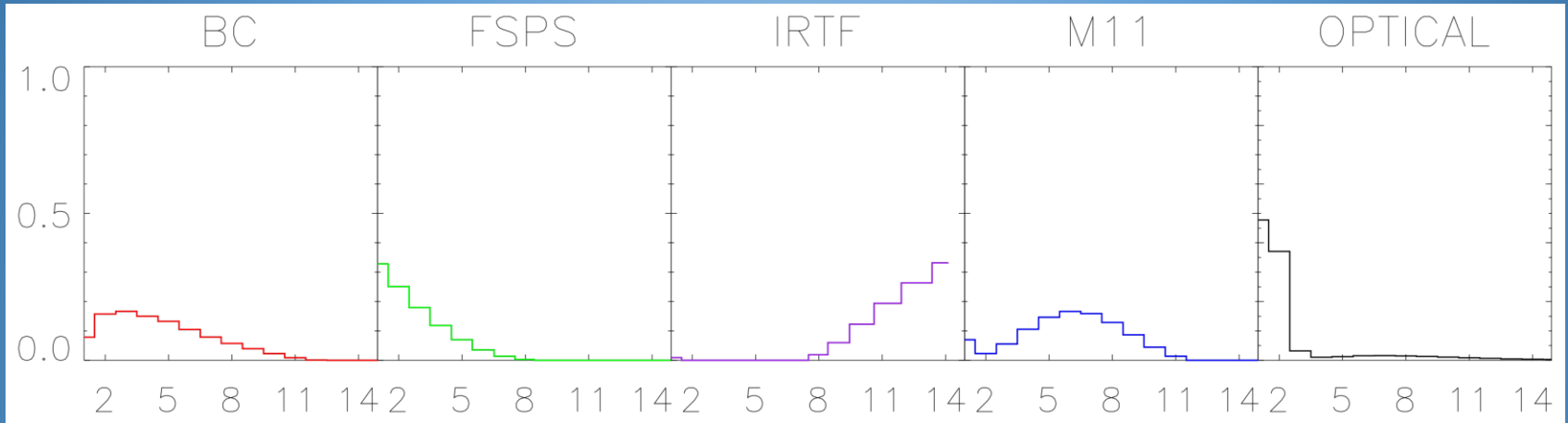






Star Formation Histories

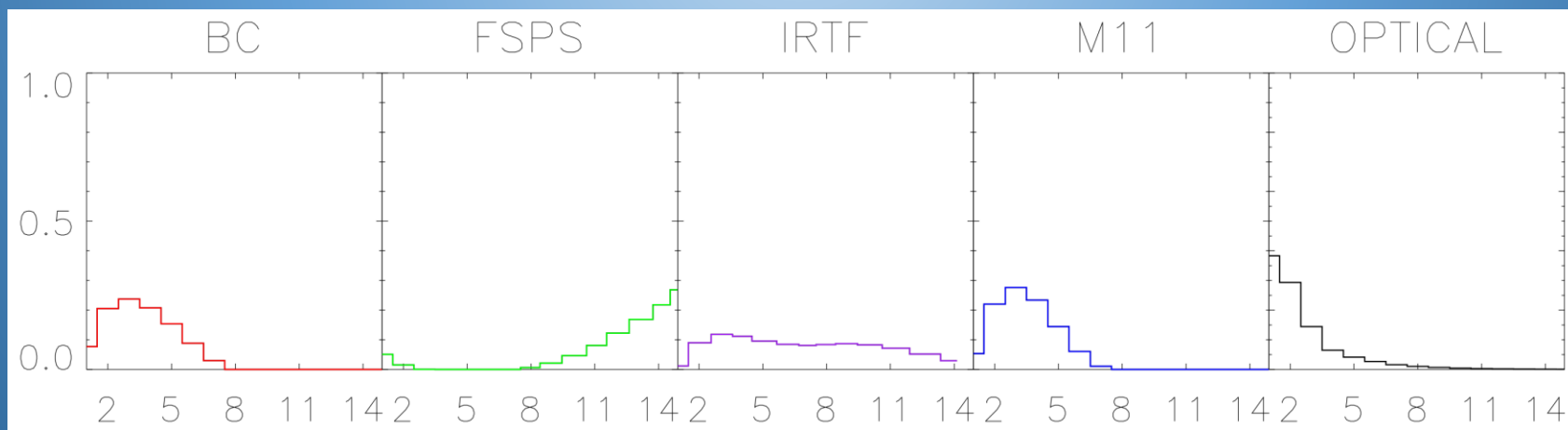
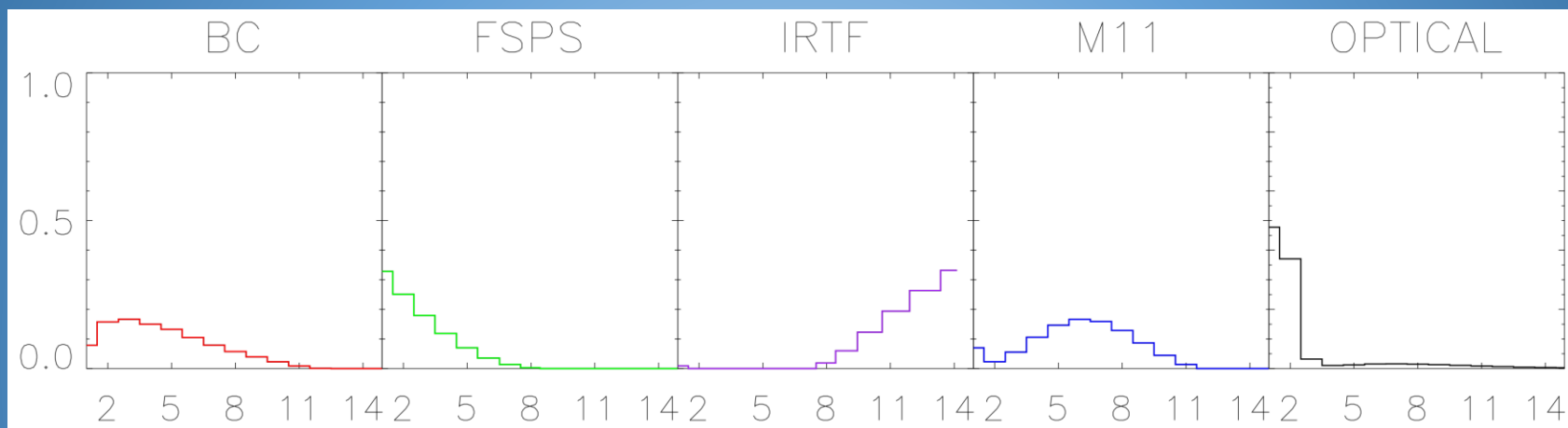
Mass Fraction



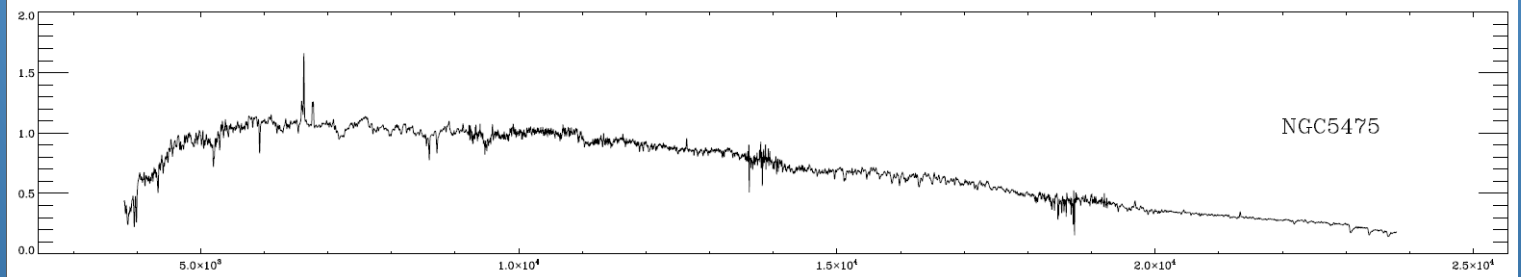
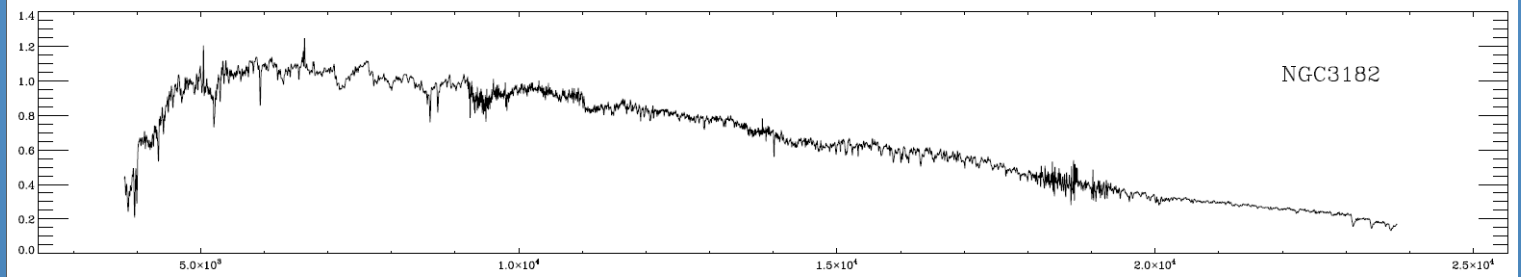
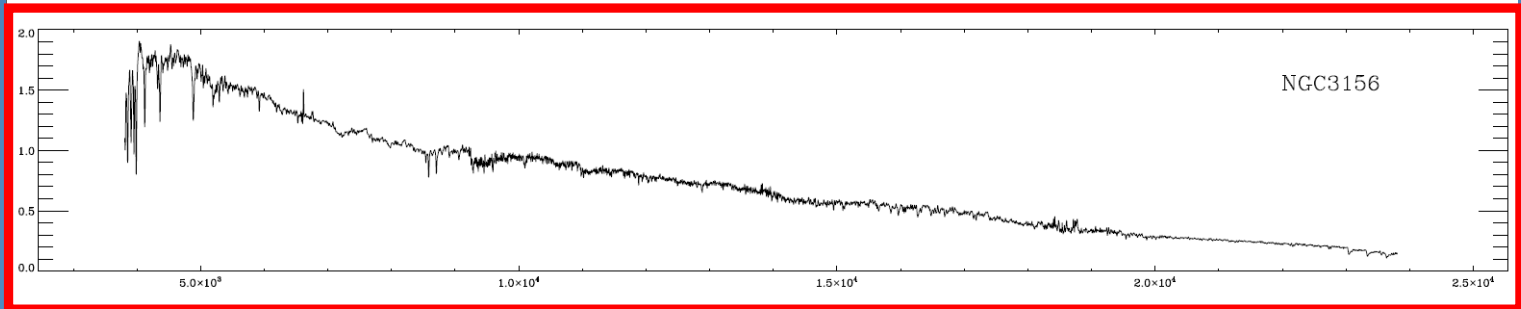
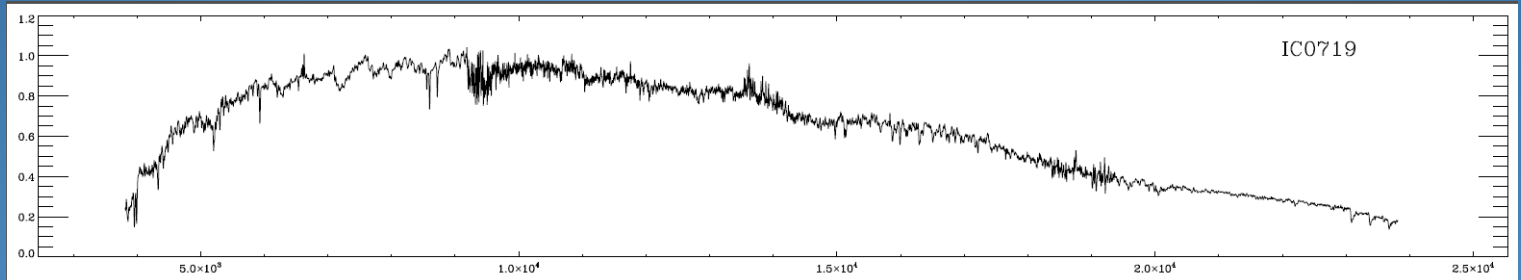
Age

Star Formation Histories

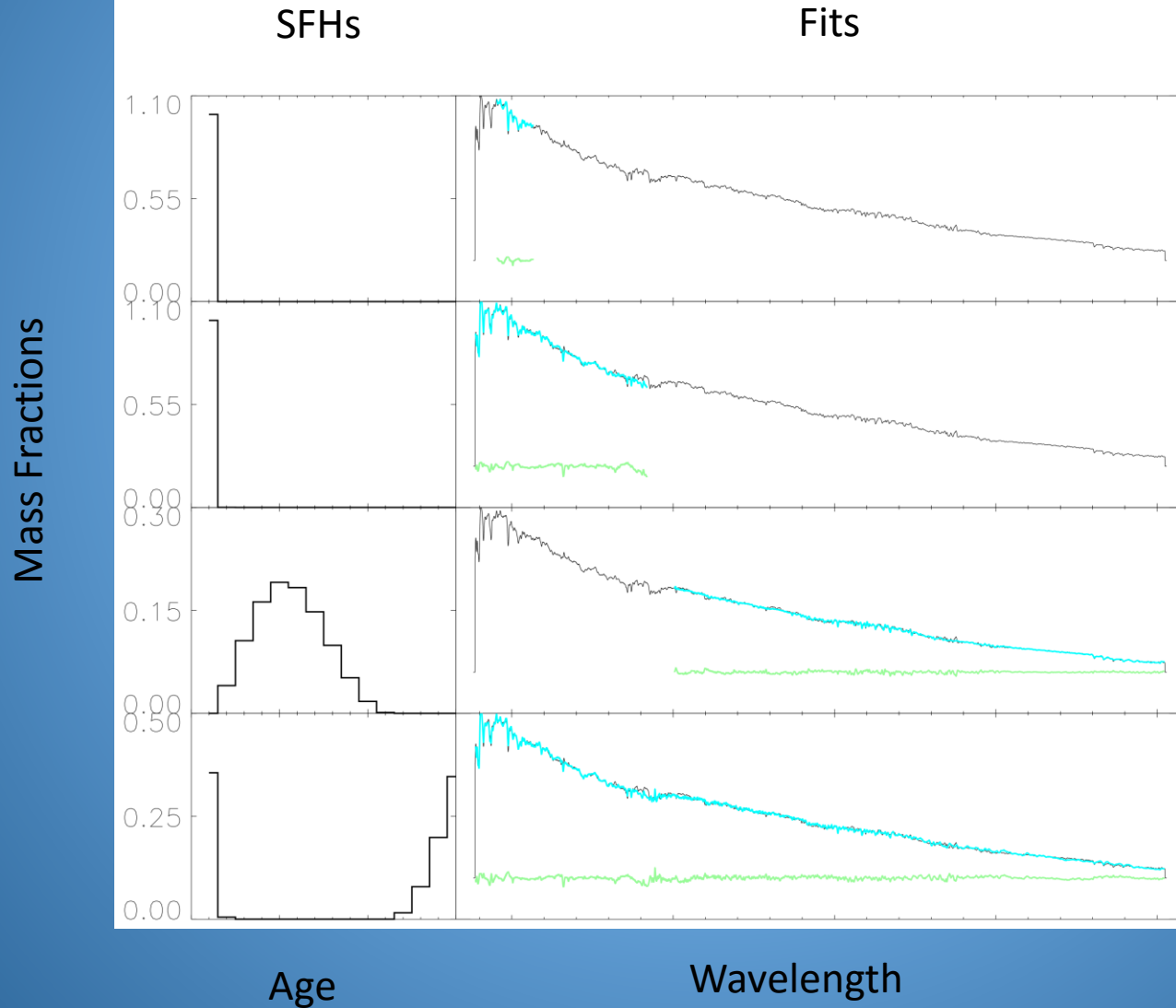
Mass Fraction



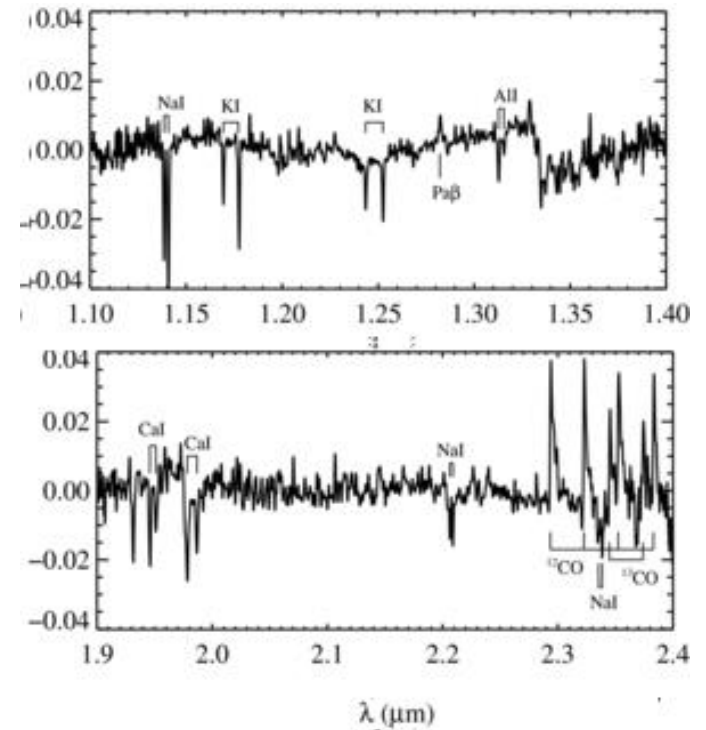
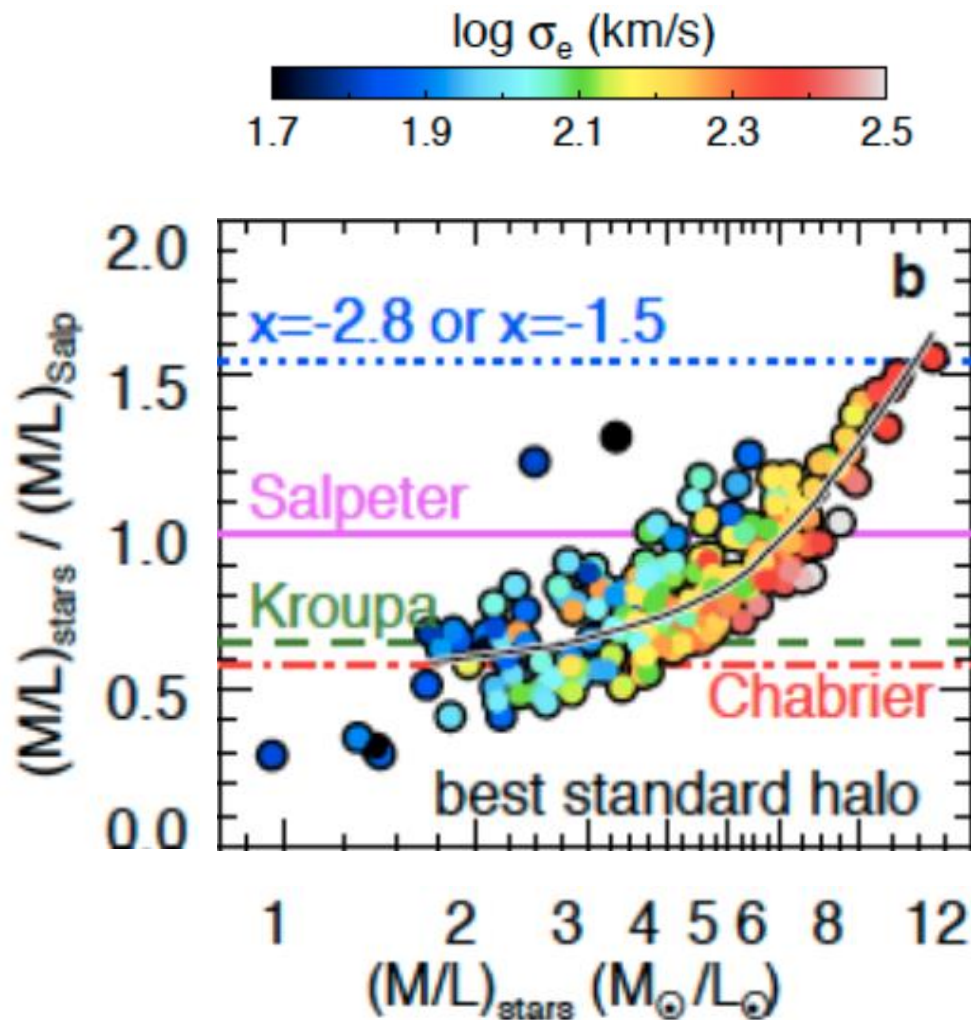
Age



Full Spectrum



Future Work



Conclusions

- Comparable NIR fits give very different SFHs
- NIR SFHs don't consistently match optical SFHs
- Fitting NIR + optical may give better results than fitting NIR alone
 - need to be cautious of e.g. resolution/error issues when fitting such a long wavelength range